

PRINT ON VIRTUALLY *ANY* MEDIA!

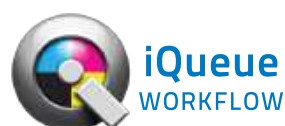
CMYK + WW or CMYK + CMYK

UP TO 2880 DPI RESOLUTION

PRINT ON MEDIA UP TO 7 INCHES TALL

DUAL LED LAMPS

(Instant Ink Curing)



251.473.6502

xante.com

BEST. EVER.

The X-24 Printer cannot be beat.

Large flatbed printers designed for signage and graphics print at high speeds but are limited by substrate thickness.

Small format printers designed for specialty items print at slower speeds and are limited by substrate length and width.

The Xanté family of X-UV Printers do **BOTH**. It's the best of both worlds.



Signage ■ Manufacturing ■ Specialty Items ■ Industrial ■ Packaging



CONTACT US TODAY
FOR MORE INFORMATION.

251.473.6502



Scan here to request a sample pack

Powered by
iQueue



Patented Spot Color
Matching System

RightON® color matching technology makes spot color matching simpler than ever. Our unique ability to print swatch pages on your media gives you amazing accuracy and iQueue easily saves colors for future use and consistency. With RightON® you can also edit any spot color with CMYK, HSV or RGB color controls.

PANTONE® Color Library

The iQueue spot color database includes the PANTONE® Color Library. This provides access to PMS color builds when using Right-On.



Welcome to the iQueue Workflow

iQueue is so powerful and easy to use, you'll wonder how you ever got along without it. Xanté continues to speed up your workflow with time-saving innovations and features. iQueue is constantly updated and improved, and upgrades come *at no cost to you*.

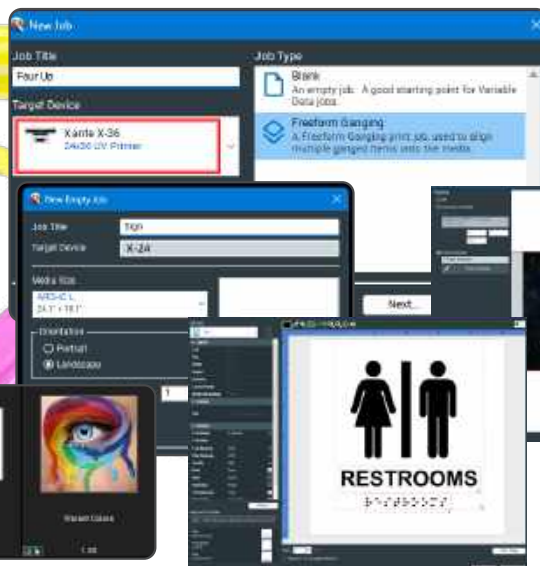
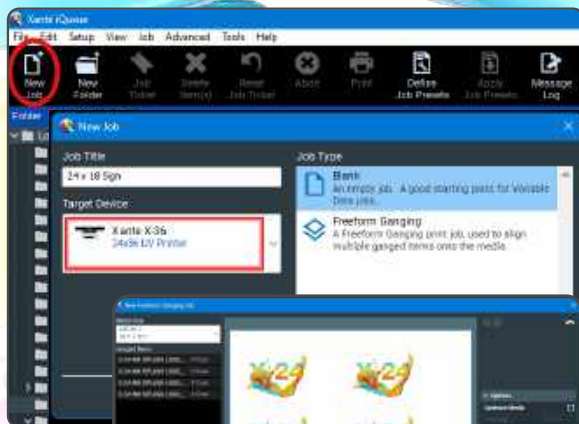
Creating a new job is as easy as dragging in a file. Built-in features mean that you can manipulate images, remove backgrounds, add text and texture, gang-up images and more **right in iQueue**. So you can achieve your desired results even if you don't have a team of tech-savvy designers. If you do, our shared folder system ensures everyone can work together quickly and efficiently.

Loaded With Features!

Job Sharing via Shared Folders
Sequential Numbering
Imposed Stack Order Printing
Full Imposition
Hundreds of Design Templates

Full-Speed Variable Data
Royalty-Free Specialty Fonts
Advanced Barcoding
QR Code Creation
Fully Independent CMYK Controls

Accurate Job Costing
Multipart Forms Creation
White Frosting
Paneling
3D Texturing
Braille





SPECIFICATIONS

PRINTING CAPABILITIES

Max. media size:	24" x 18" (60.9cm x 45.7cm)
Min. media size:	.5" x .5"
Max. print height:	7" (17.78cm)
Media transport:	24" x 19.7" (60.9cm x 50cm) Vacuum bed
Print colors:	CMYK + WW or CMYK + CMYK
Resolution:	1440/2160/2880 DPI Resolutions
UV lamp:	Dual LED, 385-415 nm, low heat curing lamp



INK AND MEDIA

Ink type:	UV, 500 mL bottles per color The maximum shelf life is 1 (one) year from Date of Manufacture (DoM). Once opened, the shelf life is 2 (two) months or 1 (one) year from DoM, whichever comes first.
Media types:	PVC plastic, styrene, wood, aluminum, metal, acrylics, coroplast, ceramics, fabric, leather, composites, paperboard, foamboard, glass, carpet, tile and more

PRINTER CONNECTIVITY

1-Gigabit Ethernet

PREPRESS SOFTWARE

Xanté iQueue Workflow:	Adobe® PostScript® 3™, Independent CMYK Density Control, Spot Color Matching, Imposition, Digital File Editing, Variable Printing, and much more
------------------------	--------------------------------------------------------------------------------------------------------------------------------------------------

WEIGHTS, DIMENSIONS

Dimensions:	38"L X 57.5"W X 28.5"H (97 x 146 x 72 cm)
Net/Gross weight:	255lbs (115kg)
Power supply:	110v or 220v 50-60hz

WORKING CONDITION

Operating temperature:	22-26°C (68°F - 78°F)
Relative humidity:	50-80RH



XANTÉ
251.473.6502
xante.com



Adobe® PostScript® 3™

**iQueue Simply Brilliant
Workflow (Included)**

Digital Color Workflow with Advanced Color
Matching and File Management Tools