



## PrintFactory Editor FEATURE-RICH, EASY-TO-USE

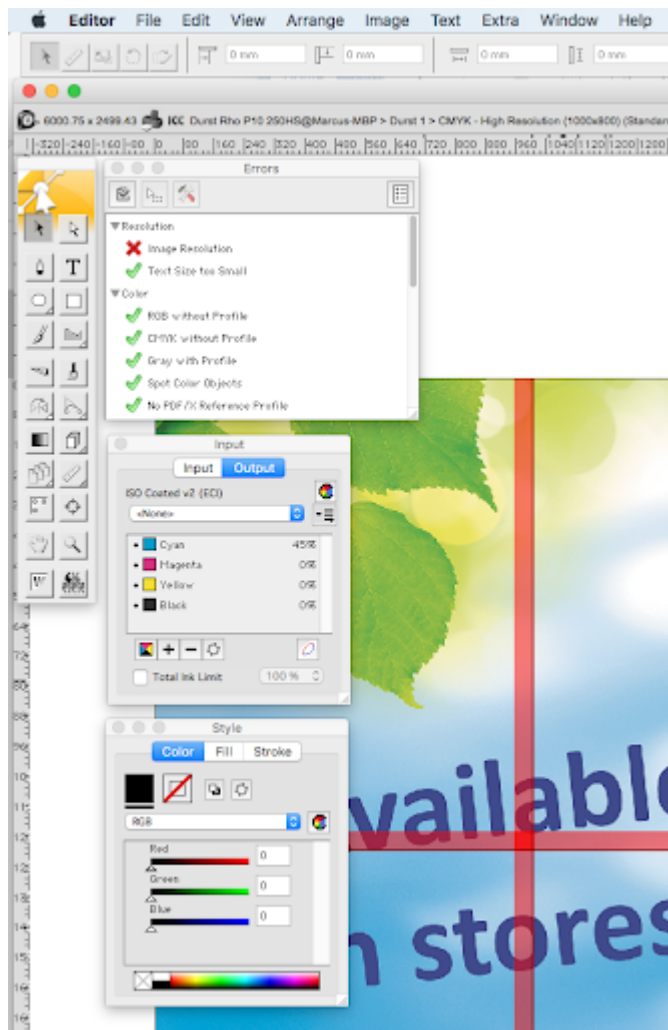
**PrintFactory's RIP gives you faster production and centralised control over all your printers and cutters, wherever they are.**

PrintFactory's Editor lets you do last minute, pre-press corrections to original files in almost any format:

- PDF, PDF-X, EPS, PostScript Level 3
- Adobe Illustrator AI, Adobe Photoshop PSD/PSB
- TIFF, TIFF-IT, HPGL/2, DXF, Scitex CT/LW
- JPEG, PNG, GIF, BMP, Targa...

Tiling, templating, contour management, color amends, font work, additions to files (such as grommets, bleeds, and folds)...

Last-minute corrections or even major changes: all the pre-press work and common amends you want, without carrying the cost of expensive 3rd-party design apps.

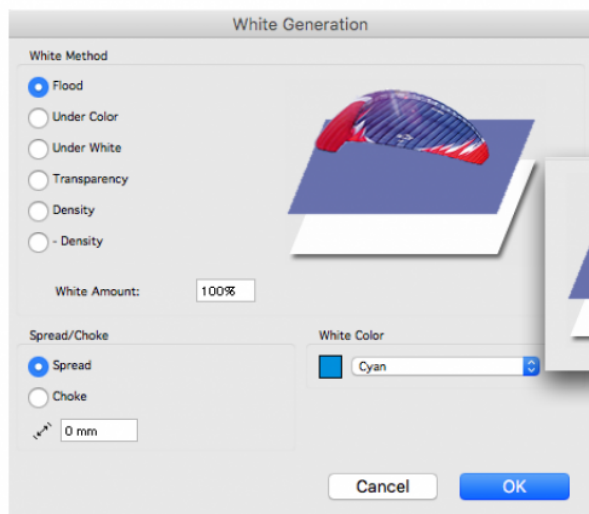
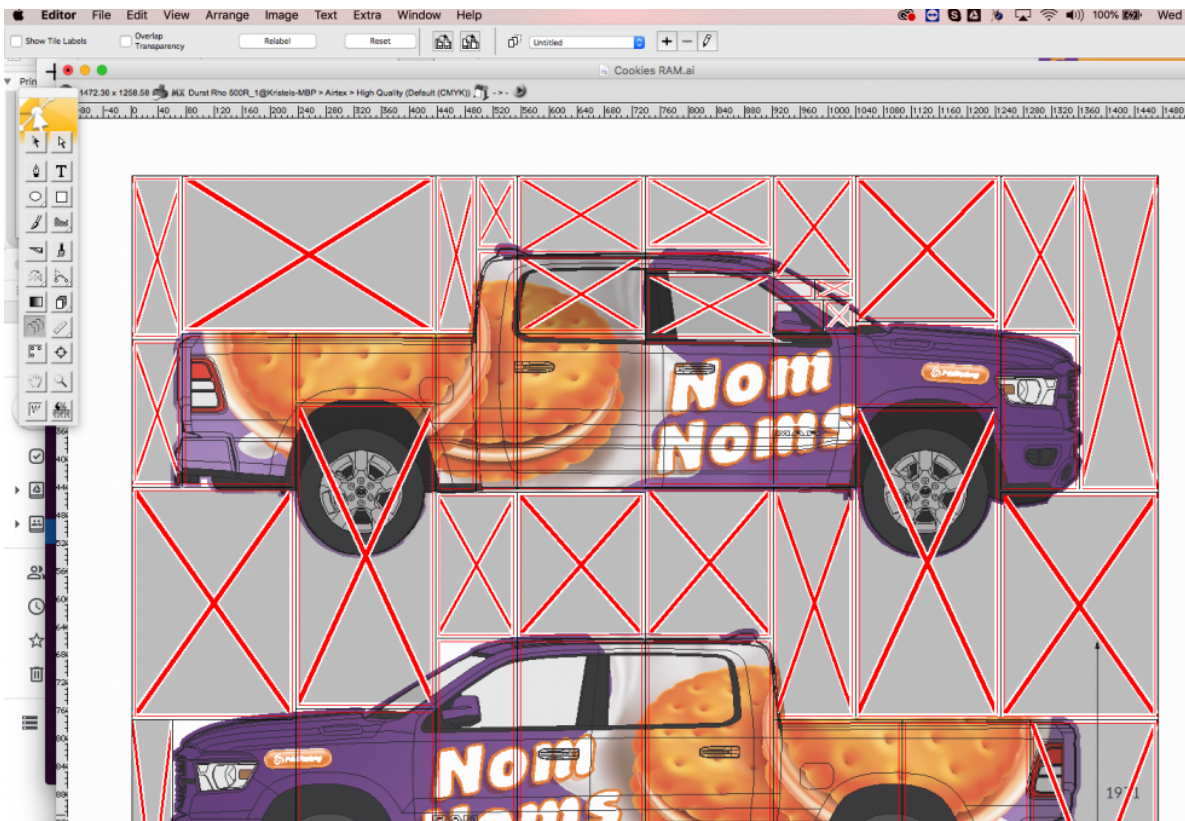


## HIGHLIGHTS

- ✓ Find the contours in any file
- ✓ Create new contours from any vector in the job
- ✓ Draw with vector drawing tools
- ✓ Expand/contract contours
- ✓ Barcode support for most cutters

## TILING

- ✓ Work with any tiling setup
- ✓ All tools for vehicle wrap setups
- ✓ Multi tiling setup per file
- ✓ Mirror tiling for vehicle wraps
- ✓ Save setups as templates
- ✓ Guarantee optimum use of media



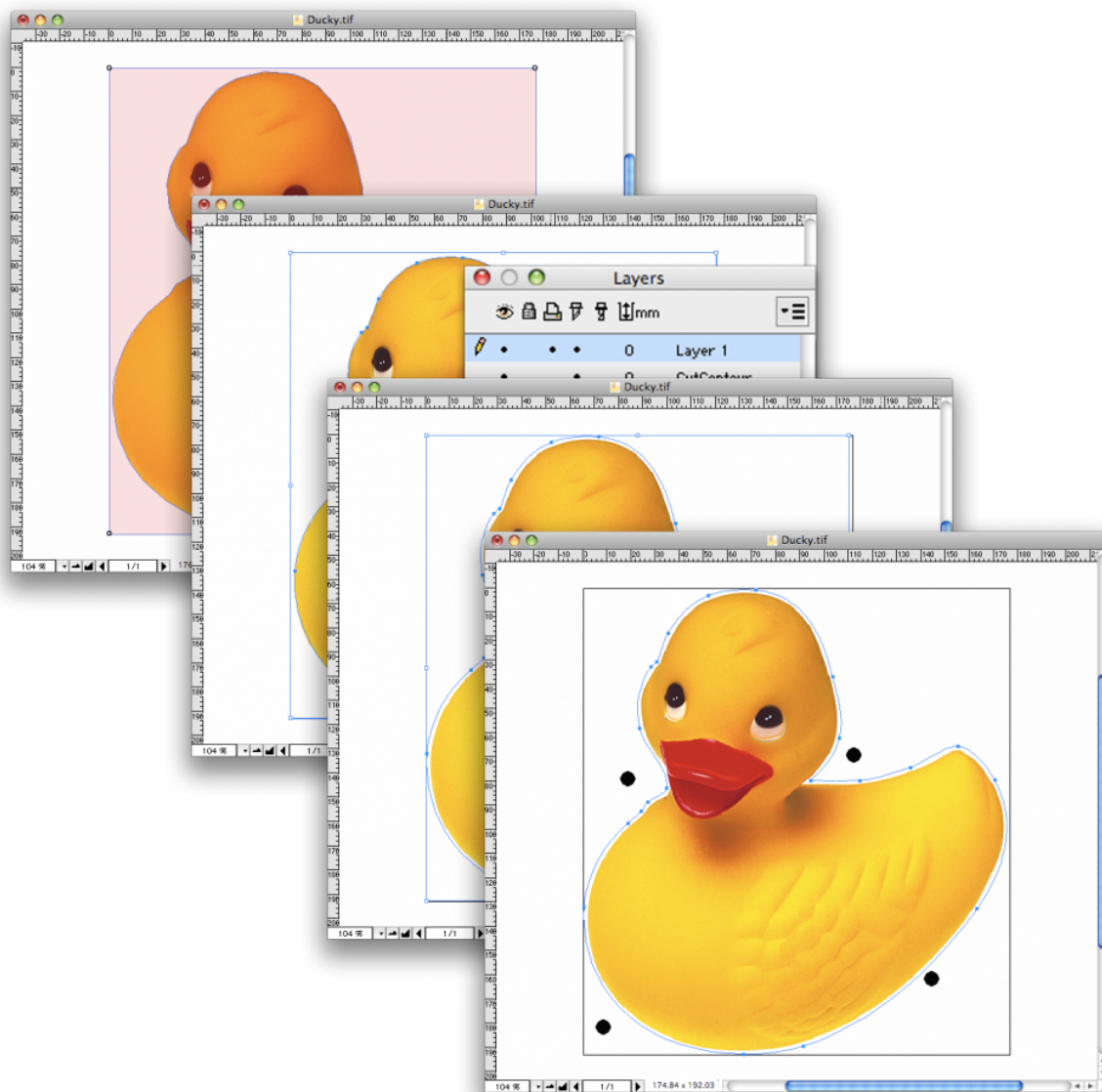
## WHITE GENERATION

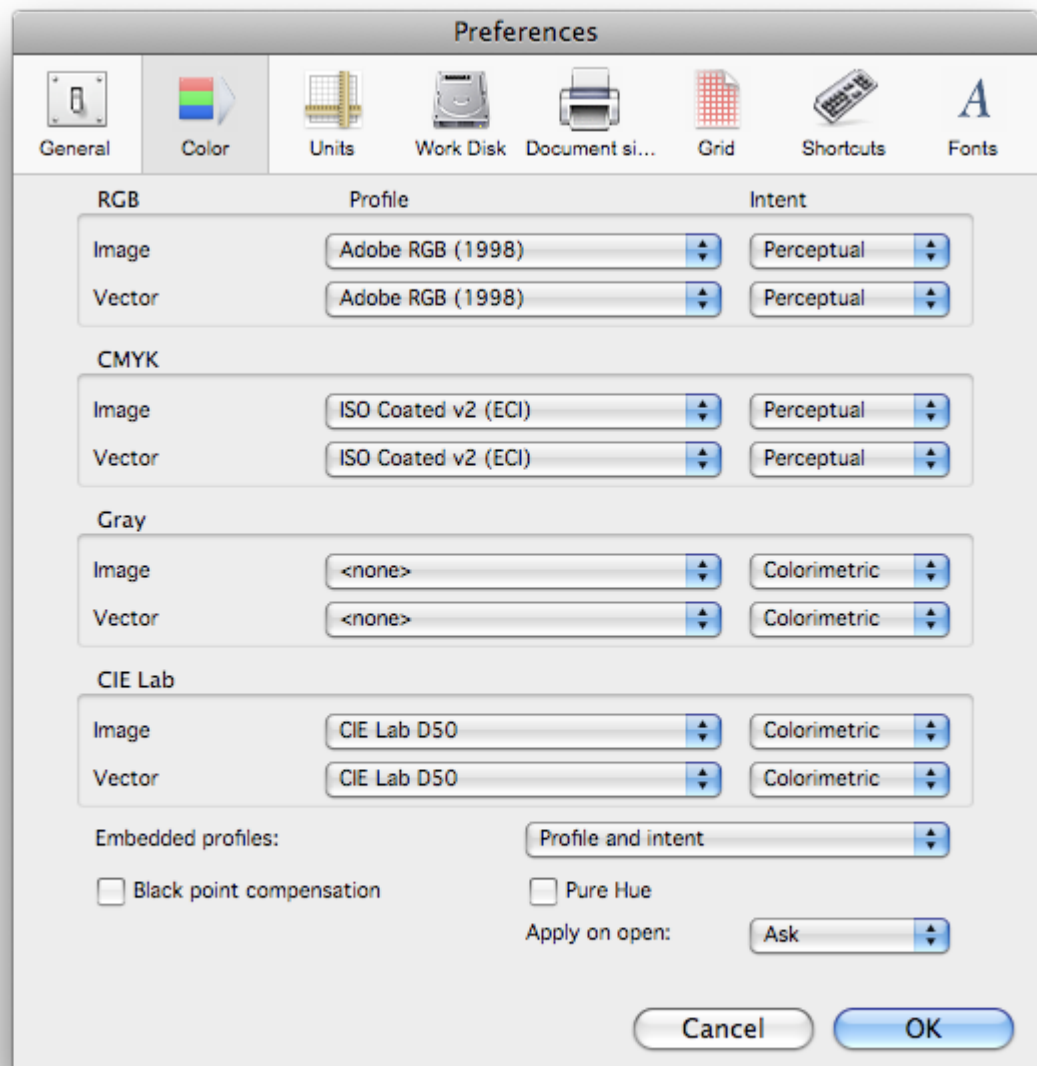
- ✓ Special ink tools for whites, varnishes, emboss, metallic inks
- ✓ Define white and/or varnish to print under any object in the job

- ✓ Create 'white' objects
- ✓ Map any Spot Color to white or varnish – you're in control

## CONTOUR MANAGEMENT

- ✓ Find the contours in any file
- ✓ Create new contours from any vector in the job
- ✓ Draw with vector drawing tools
- ✓ Expand/contract contours
- ✓ Barcode support for most cutters

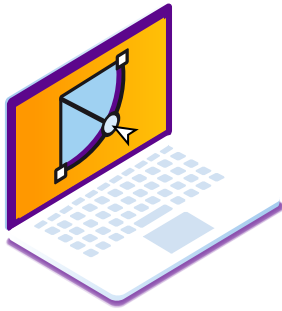




## COLOR MANAGEMENT

- ✓ Standardized LFP workflow
- ✓ Ink saving as standard **with no loss in quality**
- ✓ Includes the VISU Color Engine
  - ✓ Device Link Tuning
  - ✓ Special MultiColor Intents
  - ✓ Clean spot colors
  - ✓ Light Adjustment Tool – visual color adjustment
  - ✓ Boost Chroma/Saturation – where vivid colors are important
- ✓ Viewing Light Source – apply standard light source to profile

## Other Products



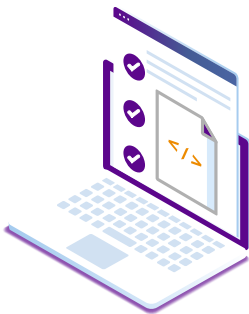
EDITOR



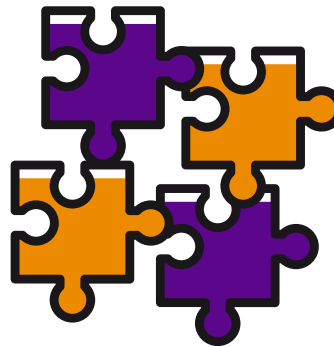
LAYOUT



CALIBRATOR



PRINTSTATION



J-I-T NESTING



CLOUD

**Better Printing, Better Profits**

## PRINTFACTORY IS SAAS

Wide format workflow software, supporting over 1,800 printers working in all MacOSX / Windows / Linux environments

## DISCOVER

Consistent Color

Lower Ink Costs

Smarter Job-Prep

Less Wasted Media

## CONTACT

**PrintFactory**

De Biezen 5

5735 SM Aarle-Rixtel

The Netherlands

Sales: [sales@printfactory.cloud](mailto:sales@printfactory.cloud)

Support: [support@printfactory.cloud](mailto:support@printfactory.cloud)

T: +31 40 30 20 009