

Ultra Mobile DR Retrofit

Tablet-based MUSICA acquisition workstation, wireless AED DR Detector and transportable MUSICA DR accessories enable vendor-neutral, easy and affordable upgrade of existing mobile X-ray modalities to high image quality DR.

- An affordable upgrade to DR with long-term leveraging of existing investments
- Excellent MUSICA DR image quality
- Dose reduction potential from Cesium Iodide (CsI) wireless detectors
- AED and wireless detectors, ideal for mobile use
- Versatile, tablet-based MUSICA acquisition workstation, offering mobile and wireless workflow benefits
- Transportable MUSICA DR accessories: generic mounting kit, suitcase, trolley
- Easy to install and service

With the vendor-neutral Ultra Mobile DR Retrofit, you can easily upgrade your existing mobile or field portable X-ray modalities to DR, while maximizing the use of your existing equipment.

Offering excellent imaging performance, with a choice of DR detectors, the tablet-based MUSICA acquisition workstation with MUSICA image processing provides a quick and affordable solution with all the benefits of a mobile, wireless workflow. This versatile tablet PC solution offers a variety of configuration options to meet all kind of workflow needs.

2-in-1, convertible tablet PC can be used with or without the keyboard. Optional connection via docking enables extended functionality, such as multiple display support.

Non-invasive configuration

The Ultra Mobile DR Retrofit delivers ultra-mobility for your mobile and portable X-ray units. With the Automatic Exposure Detection (AED) technology and standard wireless communication, all that's needed for the most basic configuration is a DR Detector and the tablet PC. The optional transportable MUSICA DR suitcase and trolley make transporting a breeze, while the optional generic mounting kit securely holds the tablet PC. Your existing mobile X-ray modality is upgraded to DR in an easy and a non-invasive way.

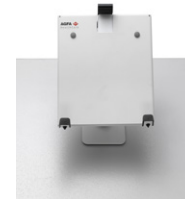


ULTRA MOBILE DR RETROFIT

Tablet can be easily mounted and removed



Vertical position



Horizontal, tilted position



Vertical, tilted position



Horizontal, tilted position, attached on the side

Wireless communication

To support different workflow requirements, two set-ups for wireless communication are available. One set-up uses a pocket external access point, and automatically ensures communication between tablet, detector and hospital network. With the other set-up, the detector operates as an access point, so no extra hardware is needed. In this case, toggling is needed to connect tablet to the detector Wi-Fi or to the hospital Wi-Fi.

Transportable MUSICA DR accessories

The generic mounting kit can be easily attached to the mobile X-ray modality. Four different positions ensure the best fit for each vendor-neutral modality. The tablet can be quickly mounted onto and removed from the kit.

The MUSICA DR suitcase enables secure and easy transportation of the 10x12" DR Detector and tablet PC, with or without keyboard. It includes space for accessories.

The MUSICA DR trolley allows convenient transportation of the 14x17" and/or 10x12" DR Detector with the tablet PC, with or without keyboard. It also includes space for accessories .

Both suitcase and trolley have a hard outer case; they are watertight, dustproof and built to protect.

Services & Support

Agfa offers service agreement solutions tailored to the customer's situation. Available in Basic, Comfort and Advanced levels, they make your lifecycle costs predictable. A worldwide team of some 1000 service professionals can provide support at all phases of your project, and even help customize your examination tree or link RIS protocol codes, further improving your return on investment. This team goes well beyond maintenance support, offering value-added services such as super user training, staff training and software upgrades. Both extended warranty and drop insurance options are available.

MUSICA DR suitcase for 10x12"



MUSICA DR trolley for 14x17" and/or 10x12"



Technical Specifications

TABLET PC

- MUSICA acquisition workstation on tablet PC ('convertible laptop'/'2-in-1')
- Dimensions (W x D x H):
274.8 x 7.25 x 209.2 mm (tablet only)
- Weight:
 - Tablet: 0.68 kg
 - Tablet with keyboard: 1.36 kg
- Display:
 - Touch
 - 12.3"
- Windows 10 64-bit
- Docking: optional

DR DETECTORS

- AED Wireless DR Detectors are supported
- Configured with dual band (2.4 – 5 GHz) pocket external access point:
 - DR 14s (Csl & GOS)
 - DR 10s (Csl)
 - DR 14e (Csl & GOS)
 - DR 17e (Csl & GOS)
 - DR 10e (Csl)
- DR Detectors operating as access-point
 - DX-D 40C, DX-D 40G
 - DX-D 45C, DX-D 45G

ACCESSORIES

Transportable MUSICA DR accessories

- MUSICA DR generic mounting kit for tablet
- MUSICA DR suitcase for 10 x 12" detector, tablet PC (or laptop)
- MUSICA DR trolley for 14 x 17" and/or 10 x 12" detectors, tablet PC (or laptop)

ULTRA MOBILE DR RETROFIT

For more information on Agfa, please visit our website on www.agfa.com ■

Agfa and the Agfa rhombus are trademarks of Agfa-Gevaert NV, Belgium, or its affiliates. DX-D and MUSICA are trademarks of Agfa-Gevaert NV, Belgium, or its affiliates. All rights reserved. All information contained herein is intended for guidance purposes only, and characteristics of the products and services described in this publication can be changed at any time without notice. Products and services may not be available for your local area. Please contact your local sales representative for availability information. Agfa-Gevaert NV diligently strives to provide as accurate information as possible, but shall not be responsible for any typographical error.

© 2018 Agfa NV
All rights reserved
Published by Agfa NV
Septestraat 27 - 2640 Mortsel
Belgium

GB 00201805